

EN Thank you for purchasing the electric wine opener gift set.

BEFORE USING FOR THE FIRST TIME

- To ensure safety and maintain the high quality of the product, we recommend that you read and follow the instructions carefully.
- Do not immerse the appliance in water or any other liquid to avoid harm to human or the product.
 - Keep body parts (e.g. hands) and utensils away from corkscrew to avoid damage.
 - Keep this product away from children.
 - Do not dismantle the product by yourself.
 - Do not press the product onto a bottle with sudden force or attempt to speed up the mechanism. This product works best when operating at its intended speed.
 - No extended use is allowed.
 - Keep away from flammable, explosive gas.



FR
Cet appareil et ses accessoires se recyclent

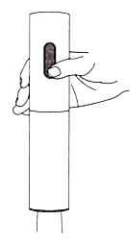
À DÉPOSER EN MAGASIN
OU
À DÉPOSER EN DÉCHÈTERIE

Points de collecte sur www.quefairemesdechets.fr
Privilégiez la réparation ou le don de votre appareil !

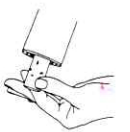


FR

Press the extract button and hold, slightly pressing the wine opener body downward at the same time. The corkscrew will turn in a clockwise direction and enter the cork, then gradually remove it from the bottle in 6-8 seconds. When the cork is entirely pulled out, the wine opener stops automatically. Release the button and take the opener off the bottle.



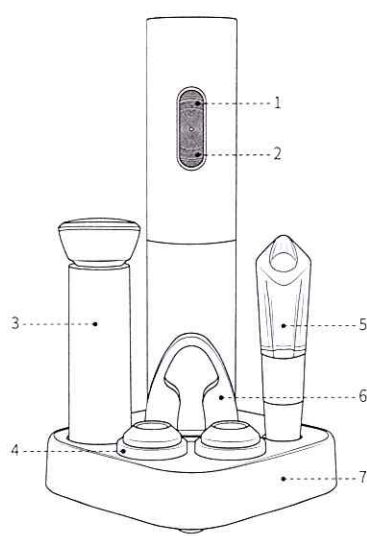
Press the upper release button and hold for 5-7 seconds, the cork automatically comes out from the opener, release the button, and the opening process is completed.



- *This product is suitable for corks with a diameter of 20 mm to 24 mm and a height of 44 mm.
- *This product is suitable for wine bottles with an bottleneck outer diameter of not more than 35 mm and an bottleneck inner diameter of 17.5 mm to 23 mm.

- CAUTIONS**
- Hold the wine opener body and the wine bottle firmly during use.
 - The blade of the foil cutter is sharp. Do not touch it with your fingers.
 - Please store this product out of reach of children.
 - Align the wine opener body with the wine bottle as much as possible, otherwise the cork cannot be easily pulled out.

PRODUCT DESCRIPTION



1. Release button
2. Extract button
3. Manual vacuum pump
4. Stopper
5. Wine aerator & pourer
6. Foil cutter
7. Storage base

TROUBLE SHOOTING

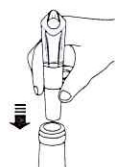
If the opener does not work or stops during uncorking:

- Please check that the batteries are alkaline batteries.
- Please check that the batteries are installed correctly.
- Please confirm there is sufficient battery power.
- Please confirm that the wine opener is aligned with the wine bottle vertically during the opening process.

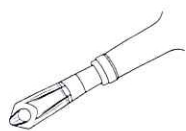
If the above operations are all correct and the opener still works abnormally, please contact the vendor for maintenance service.

HOW TO USE THE WINE AERATOR & POURER

- Insert the wine aerator & pourer into the bottleneck.



- Tilt the bottleneck to pour the wine through the wine aerator & pourer.

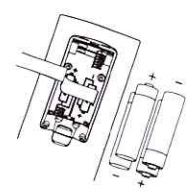
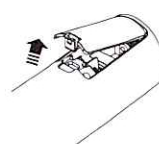


- *This product is suitable for wine bottles with an bottleneck inner diameter of 17.5 mm to 19.5 mm.

- CAUTIONS**
- Never cover the hole on the wine aerator & pourer to avoid affecting aerating and pouring functions.
 - Clean the product with soft detergents and water after use.

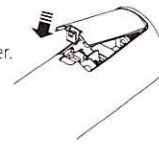
HOW TO INSTALL THE BATTERIES

- Press the arrow on the battery cover with fingers and pull it up by force to open the battery cap.



- Insert 4 pieces of AA alkaline batteries according to the positive and negative terminals.

- Close and lock the battery cover.

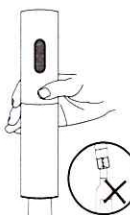


HOW TO USE THE WINE OPENER

Remove the foil cutter and put it onto the bottleneck, hold tightly with fingers, rotate it around the foil seal for one to two circles, and cut off the foil seal.



Hold the bottle firmly with one hand and hold the wine opener with the other. Place the bottom of the wine opener body on top of the wine bottle and ensure the wine opener body remains in line with the bottle as vertically as possible.



HOW TO USE VACUUM STOPPER

Vacuum Sealing

- Insert the stopper into the bottleneck firmly.



- Put the pump on the stopper firmly, pull the handle up and down for about 15 times (with half bottle of wine left.).



- Rotate the date scale ring on the stopper to mark the sealing date. It is recommended to finish the rest wine in 7 days.

Re-opening

- When re-opening the bottle, remove the valve in the stopper by gently moving it left and right, and then open up after an airflow sound.



- * This product is only suitable for wine bottles with an inner diameter of 18 - 19 mm.

- *When using the stopper to preserve, it is not recommended to store the wine bottle horizontally.